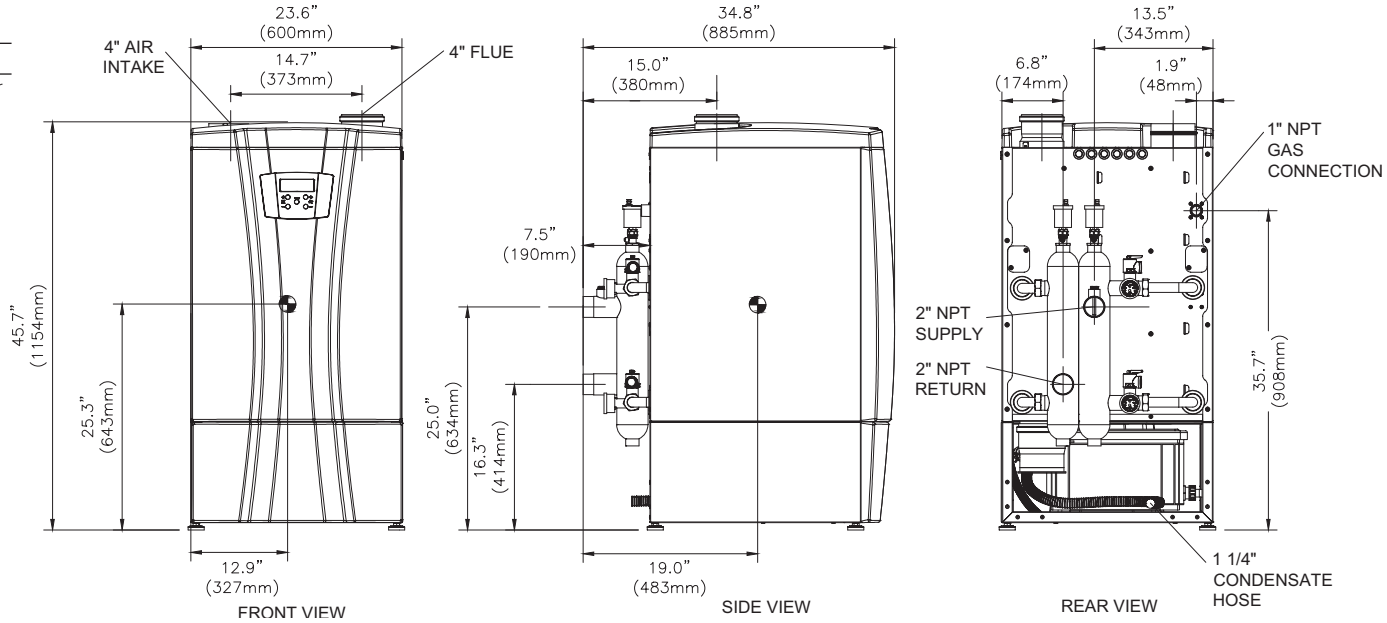


**CODE OPTIONS**

<b>CSD-1*</b>	Manual Reset LWCO
---------------	-------------------

\*Argus control is factory programmed for one ignition trial.



**Notes:**

1. Dimensions are approximate and should not be used to "rough-in" equipment.
2. Dimensions are subject to change without notice.
3. Ⓞ Symbol indicates center of gravity.

**BOILER CERTIFIED RATINGS & CAPACITIES**

<b>Fuel Type</b>	Natural/Propane Gas	<b>Boiler FLA</b>	2.50*
<b>Input BTU/hr.</b>	500,000 / 147 kW	<b>Min. Gas Pressure Required</b>	3" W.C.**
<b>Output BTU/hr.</b>	472,000 / 138 kW	<b>Max. Gas Pressure Allowed</b>	13" W.C.
<b>Electrical Requirements</b>	120VAC/ 1 ph/ 60 hz	<b>Operating Weight</b>	356 lbs. / 162 kg.

**BOILER TEMPERATURE RISE / PRESSURE DROP**

25°F / 13.9°C				30°F / 16.7°C				35°F / 19.4°C			
Flow Rate		Pressure Drop		Flow Rate		Pressure Drop		Flow Rate		Pressure Drop	
GPM	L/s	Ft	kPa	GPM	L/s	Ft	kPa	GPM	L/s	Ft	kPa
37.8	2.4	33.0	98.6	31.5	1.9	23.0	68.7	27.0	1.7	17.0	50.8

**BOILER / WATER HEATER TRIM & CONTROLS**

<b>Main Gas Valve</b>	Sit 848 Sigma	<b>Air Switch</b>	HUBA
<b>Ignition Control</b>	Argus	<b>Blower Motor</b>	EBM
<b>Operating Control</b>	Argus	<b>Relief Valve - IW</b>	3/4" x 3/4" @ 125 psi
<b>High Limit</b>	J2D-AOVJ	<b>Relief Valve - IB</b>	3/4" x 3/4" @ 50 psi

**WATER HEATER HOURLY RECOVERY CAPACITY (GPH & LPH)**

40°F	22°C	60°F	33°C	80°F	44°C	100°F	56°C	120°F	67°C	140°F	78°C
1460	5519	973	3679	730	2760	584	2208	487	1840	417	1577

**A.S.M.E.**

<b>ASME Sect IV Htg Surface</b>	12.00 Sq. Ft. / 1.125 Sq. M.	<b>Design Data</b>	Max. 160 psig & 210°F
<b>Water Volume</b>	4.0 gal / 15.41 Liters		

\* Add circulator amps.

\*\* For incoming gas pressures lower than 3" W.C. natural or propane, consult factory.

**REP FIRM** \_\_\_\_\_  
**SUBMITTED BY** \_\_\_\_\_  
**JOB NAME** \_\_\_\_\_  
**ARCHITECT** \_\_\_\_\_  
**ENGINEER** \_\_\_\_\_  
**CONTRACTOR** \_\_\_\_\_  
**DATE** \_\_\_\_\_

**INFINITE ENERGY 2-500**

**Category II or IV Appliance**  
(see Installation and Operation Manual for venting information)



A Division of Mestek, Inc.  
Westfield, MA 01085  
(413) 568-9571